



Dura-Plate® 2300

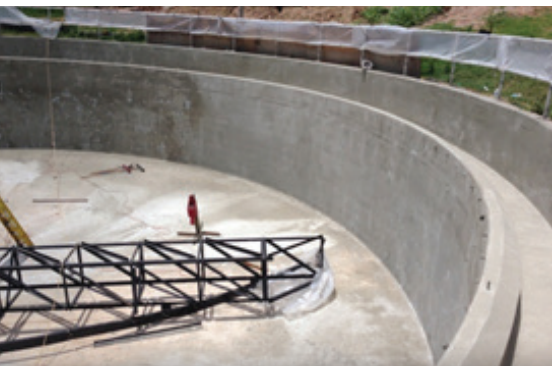
Waterbased Epoxy Cementitious Resurfacer

DURA-PLATE® 2300 is a three-component, **epoxy modified** cementitious resurfacer containing Portland Cement, hydrophobic thixotropes, fiber reinforcement, graded silica sand and other abrasion-resistant aggregates. This Sherwin-Williams sole-sourced kit offers the Part A Epoxy, Part B Hardener and Part C Mortar in a single packaged kit that makes ordering simple, while saving time with processing and application on the job.

DURA-PLATE® 2300 is used for resurfacing, patching and filling voids (bugholes) in concrete and masonry structures. Dura-Plate® 2300 is the perfect alternative to the high cost of epoxy resin fillers and the curing restrictions associated with cementitious resurfacers. Dura-Plate® 2300 provides a hard, durable surface with excellent adhesion that minimizes out-gassing problems typically associated with coating concrete.

Benefits

- 3-component kit package in a single 5-gallon pail provides ease of ordering for customer and less hassle for applicator
- Greater working time and the ability to re-agitate to reduce viscosity
- Releases easily from the trowel to reduce worker fatigue
- Reduces the potential for pinholing/out-gassing in subsequent coats
- Open/unlimited recoat window to accommodate project demands saves time and money
- Allows the applicator to fill large voids in a single application
- Greater flexibility in application temperatures allow for a longer season for application
- At package consistency, the product can be hand troweled, and with the addition of potable water, it can be spray applied



Product Description

Finish:	Flat
Color:	Concrete Gray
Density:	110 lb/cubic ft.
Volume Solids:	100%, mixed
VOC:	19 g/L; 0.15 lb/gal, mixed
Mix Ratio:	3.1 gallon, pre-measured kit

Recommended Spreading Rate:

Coverage for 3.1 gallon kit: Approximately 77 ft² (7.2 m²) at 1/16" thickness; 38.5 ft² (3.6 m²) at 1/8" thickness; 19.25 ft² (1.8 m²) at 1/4" thickness; 10 ft² (1.7 m²) at 1/2" thickness

Drying Schedule:

@ 77°F/25°C
50% RH

To Touch: 3-4 hours

**Topcoat/
Overcoat**

minimum: 8 hours † (24 hours)

maximum: Unlimited

Full Cure: 12 days

Drying time is temperature, humidity, and film thickness dependent.

† All flake filled coatings require overnight cure before topcoating.

Pot Life: 70 minutes

Sweat-in-Time: Never required

Shelf Life: 12 months, unopened
Store indoors at 40°F (4.5°C)
to 100°F (38°C).

Flash Point: >200°F (93°C), mixed

Reducer: Not recommended

Clean Up: Soap and warm water

Recommended Uses

Concrete Structures

- Water
- Wastewater
- Secondary Containment
- Power
- Food and Beverage
- Sewer Collection Systems

Performance Characteristics

Substrate*: Concrete

Surface Preparation*: SSPC-SP13/NACE 6, ICRI Concrete Surface Profile (CSP) 5

System Tested*:

1 ct. Dura-Plate 2300 @ 3/16" dft

*28-day cure unless otherwise noted below

Test Name	Test Method	Results
Adhesion to Concrete	ASTM D7234	403 psi* / >438 psi**
Coefficient of Thermal Expansion	ASTM C531	6.9 x 10 ⁻⁶ in/in/F**
Flexural Strength	ASTM C293	795 psi* / >1,270 psi**
Linear Shrinkage	ASTM C596 ASTM C531	-0.014%** -0.366%**
Modulus of Elasticity	ASTM C469	>1,680,000 psi* >1,860,000 psi**
Shear bond	ASTM C882	2,094* / 2,804 psi**
Shrinkage	ASTM C157	<0.18%**
Splitting Tensile Strength	ASTM C496	480 psi* / 600 psi**
Tensile Strength	ASTM C307	>600 psi*

* 24-hour cure

** 28-day cure

A complete line of products. Market expertise. On-time distribution.

What else would you expect from a world leader in protective coatings and linings?

It starts with a complete line of time-tested, high-performance products and some of the most innovative technologies in the coatings industry. But we know that it takes more than product alone to be a world leader in protective coatings and linings. And so do the customers that rely on us every day as we help them protect their business.

That's where nearly 150 years of coatings industry experience comes in. Add to that a NACE-trained workforce with a combined 3,700 years of experience in corrosion control. The market-specific knowledge that our experts provide to evaluate, recommend and deliver the highest-performance coatings and linings that protect our customers' assets.

It also means that we deliver on time, every time from over 4,000 company-owned distribution points worldwide. Leave nothing to chance. Your single source of supply. Sherwin-Williams.



To learn more, visit us at

North America: 1.800.524.5979

www.sherwin-williams.com/protective

©2015 The Sherwin-Williams Company
Protective & Marine Coatings 7/15 SW13840